

Window Trick Light : HD-AW0112WX



Product Features

Our stunning LED Window Trick Light delivers perfect solutions to light up the window edge. We have a wide range of beam angles and wattage to meet your design requirements. Window trick lights are one of the most suitable lights to light your façade window.



PHYSICAL

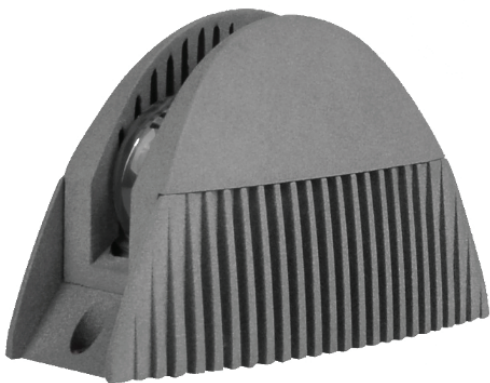
Body	Die-Cast Aluminium
Dimensions	152*65*95MM
Finish	Powdear Coating
IP Rating	IP67

OPTICAL

Lamp	LED
Cover	Clear Tempered glass
Beam Angle	2*180°
Color Temp.	Single color
LED Chip	CREE OSRAM
Lumen Output	+85lm / W
Color rendering i(Ra):	>82
Power factor (PF):	>0.9

ELECTRICAL

Power	6*2W
Controller	Switch
Input voltage	220V -240V
Lamp life	50,000 h
Ambient Temp.	-25°C ~ 50°C
Ambient Humidity	-25% ~ +60%
PCB	Excellent heat conductivity aluminum coefficient of heat conductivity $\geq 2.0w/mk$
PCB Voltage protection	Reverse voltage protection
PCB Current Stabilization	Integrated current stabilization system



Ref.	Wattage	Voltage	Color Temp	Beam	Control
HD-AW0112R4	6*2W	24V	RGBW	2*180°	DMX