

Product Features

- No Shadow Gap in joint.
- Various customization options including fixture length, color, and pixel configuration
- Direct or diffused views
- Slim profile
- Flexible mounting capability
- Outdoor-rated and UV-resistant
- Simple cabling
- Auto-addressable pixels



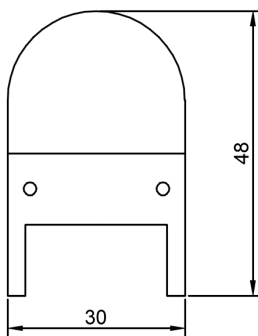
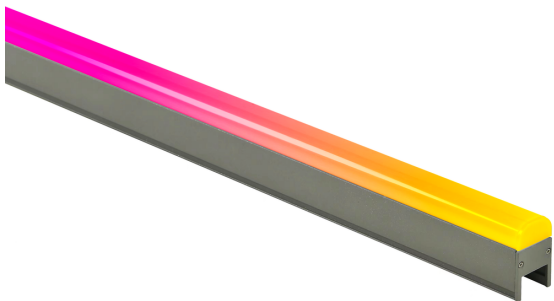
Body	Extruded Aluminium
Dimensions	W30*H48*L1000mm
Finish	Powdear Coating
IP Rating	IP66

OPTICAL

Lamp	LED
Cover	Frosted PC
Beam Angle	180°
Color Temp.	Mono Color, RGB, RGBW
LED Chip	Lumileds Philips
Color rendering i(Ra):	>82
Power factor (PF):	>0.9

ELECTRICAL

Power	13W
Controller	Switch Dali DMX
Input voltage	24V 48V
Lamp life	50,000 h
Ambient Temp.	-25° C ~ 50° C
Ambient Humidity	-25% ~ +60%
PCB	Excellent heat conductivity aluminum coefficient of heat conductivity $\geq 2.0\text{w/mk}$
PCB Voltage protection	Reverse voltage protection
PCB Current Stabilization	Integrated current stabilization system



Ref.	Wattage	Voltage	Color Temp	Pixel/M	Control
HD-L15060	12W	24V 48V	Mono Color	/	On/Off
HD-L15048R	10W	24V 48V	RGB	8	DMX / SPI
HD-L15048RW	13W	24V 48V	RGBW	8	DMX / SPI
HD-L15048W2R	13W	24V 48V	RGB	16	DMX /SPI
HD-L15048W3RW	15W	24V 48V	RGBW	16	DMX / SPI
HD-L15048W4R	13W	24V 48V	RGB	40	DMX /SPI
HD-L15048W5RW	15W	24V 48V	RGBW	40	DMX / SPI