

## Product Features

- No Shadow Gap in joint.
- Various customization options including fixture length, color, and pixel configuration
- Direct or diffused views
- Slim profile
- Flexible mounting capability
- Outdoor-rated and UV-resistant
- Simple cabling
- Auto-addressable pixels



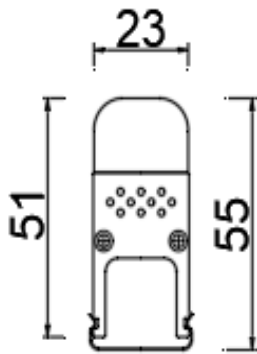
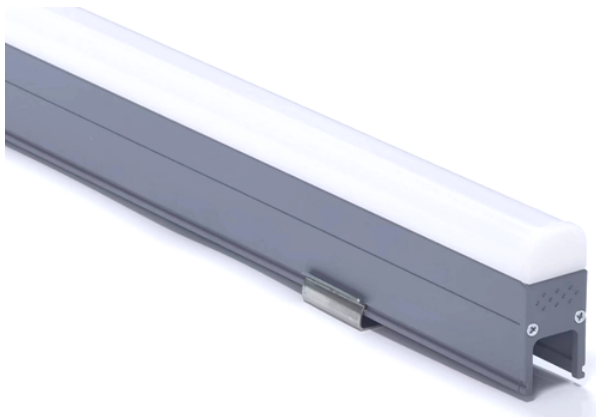
|            |                    |
|------------|--------------------|
| Body       | Extruded Aluminium |
| Dimensions | W23*H51*L1000mm    |
| Finish     | Powdear Coating    |
| IP Rating  | IP66               |

## OPTICAL

|                        |                       |
|------------------------|-----------------------|
| Lamp                   | LED                   |
| Cover                  | Frosted PC            |
| Beam Angle             | 180°                  |
| Color Temp.            | Mono Color, RGB, RGBW |
| LED Chip               | Lumileds   Philips    |
| Color rendering i(Ra): | >82                   |
| Power factor (PF):     | >0.9                  |

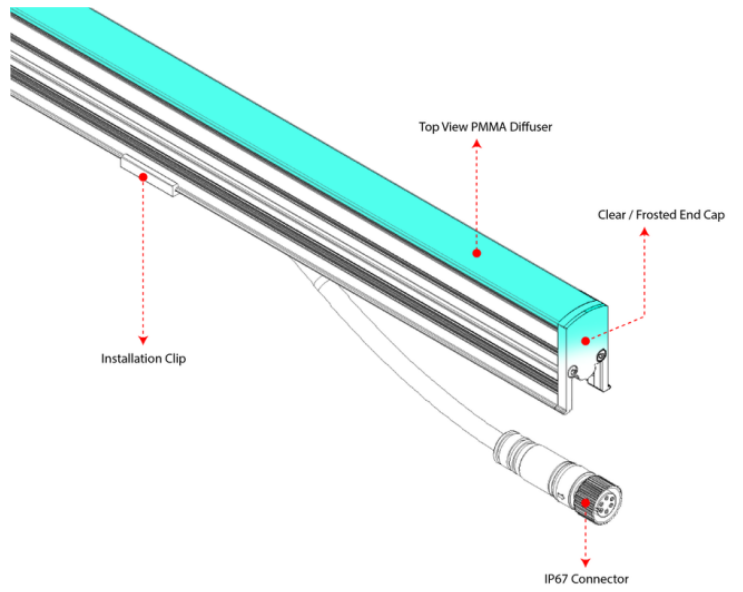
## ELECTRICAL

|                           |  |
|---------------------------|--|
| Power                     | 13W  |
| Controller                | Switch   Dali   DMX  |
| Input voltage             | 24V  |
| Lamp life                 | 50,000 h   |
| Ambient Temp.             | -25° C ~ 50° C   |
| Ambient Humidity          | -25% ~ +60%  |
| PCB                       | Excellent heat conductivity aluminum<br>coefficient of heat conductivity $\geq 2.0\text{w/mk}$ |
| PCB Voltage protection    | Reverse voltage protection   |
| PCB Current Stabilization | Integrated current stabilization system  |



| Ref.          | Wattage | Voltage | Color Temp | Pixel/M | Control   |
|---------------|---------|---------|------------|---------|-----------|
| HD-L02060     | 12W     | 24V     | Mono Color | /       | On/Off    |
| HD-L02048R    | 10W     | 24V     | RGB        | 8       | DMX / SPI |
| HD-L02048RW   | 13W     | 24V     | RGBW       | 8       | DMX / SPI |
| HD-L02048W2R  | 13W     | 24V     | RGB        | 16      | DMX /SPI  |
| HD-L02048W3RW | 15W     | 24V     | RGBW       | 16      | DMX / SPI |
| HD-L02048W4R  | 13W     | 24V     | RGB        | 40      | DMX /SPI  |
| HD-L02048W5RW | 15W     | 24V     | RGBW       | 40      | DMX / SPI |

120° Top View



180° Top & Side View

