



HD-S208R Integrated Controller Instructions

V2.0

Shenzhen Hongda United Technology Co., Ltd.

Description

The HD-S208R subcontroller is a display data transmission device in the LED lighting control system. Input support standard ARTNET 2016 protocol. It can be controlled by third-party play software supporting the ARTNET protocol, such as MADRIX software.

Output support standard BSR E1.11 USITT DMX512-A protocol. It can be used for compatible DMX512 signal protocol lighting control projects. Output support standard ANSI E1.20-2010 RDM protocol, can be used to control and detect lamps that support RDM protocol.

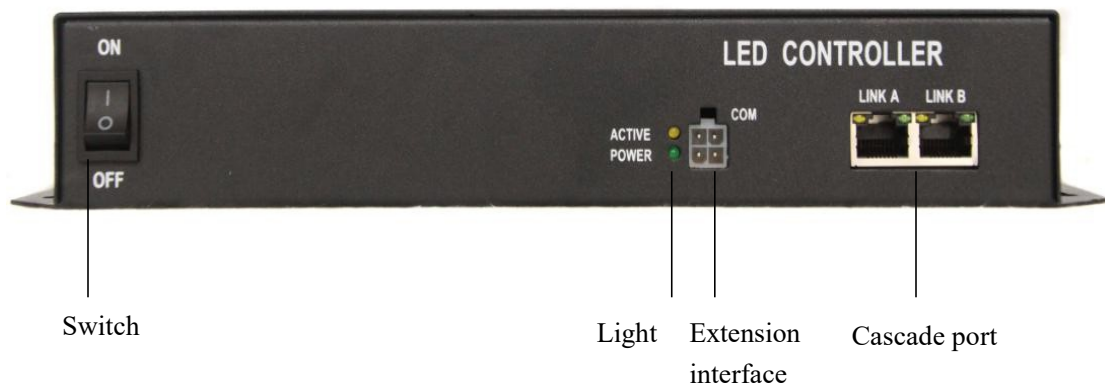
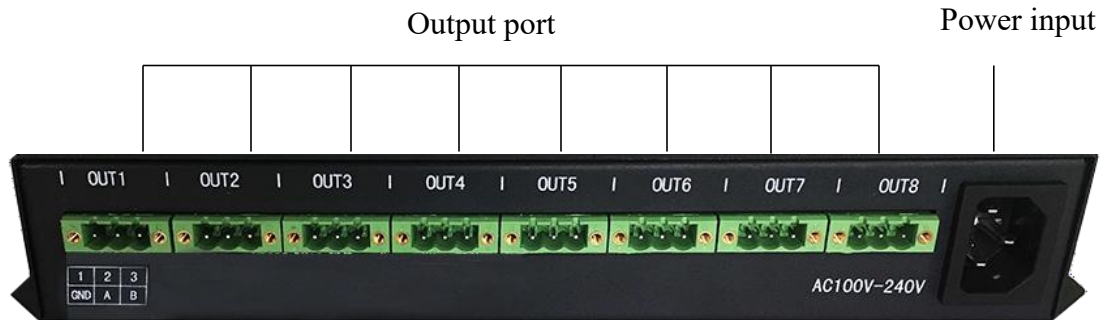
Produce Drawing:



Feature

- ◆ Input support standard ARTNET2016 protocol, which can be controlled by third-party play software that supports the ARTNET protocol.
- ◆ Output support standard BSR E1.11 USITT DMX512-A protocol. Can be used for compatible DMX512 signal protocol lighting control projects.
- ◆ Output support ANSI E1.20-2010 RDM protocol. Can be used to control and detect luminaires that support RDM protocols.
- ◆ 8 port output with 512 channels per output port (standard RDM protocol)
- ◆ Up to 250 controllers cascaded
- ◆ Gigabit transmission technology with transmission distance of up to 100 meters. More than 100 meters can be transmitted using a fiber optic transceiver.
- ◆ Controller LINK A is the input and LINK B is the output.
- ◆ Flexible support for 32 to 65536 grayscale level settings based on the lamp's use of chips to restore real image color and detail.
- ◆ Controller built-in multiple test effects, Support for grayscale testing, mesh testing, color bar testing, available for selection.
- ◆ The software can detect all the controllers in the system in real time intelligently identify the system architecture, read the current state information of the device, and monitor the operation of the project conveniently.
- ◆ Software supports basic lamp parameter settings, write address and other functions.
- ◆ Software supports teromorphosis wiring, and can flexibly support for a variety of lighting screens.
- ◆ Software can support automatic play of programs based on year, month, day, time and week requirements.

Panel Description



Port Specification

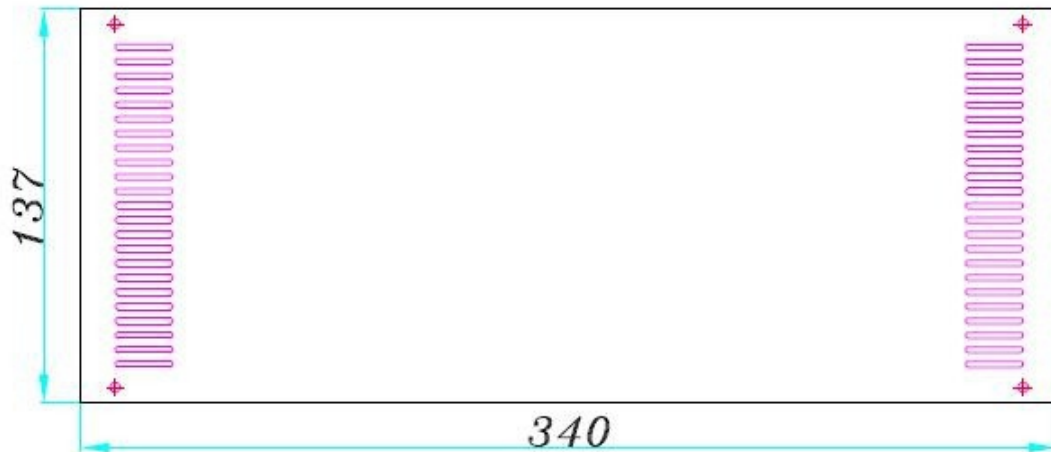
Interface		
Type	Quantity	Definition
LINK A	1	Cascading signal input port for connecting Pc or superior controller
LINK B	1	Cascading signal output port for connecting Pc or subcontroller
COM	1	Extension interface
AC100~240V	1	Power
OUT	8	Signal output port,supporting DMX

Signal output port			
Type	1	2	3
DMX	GND	A	B

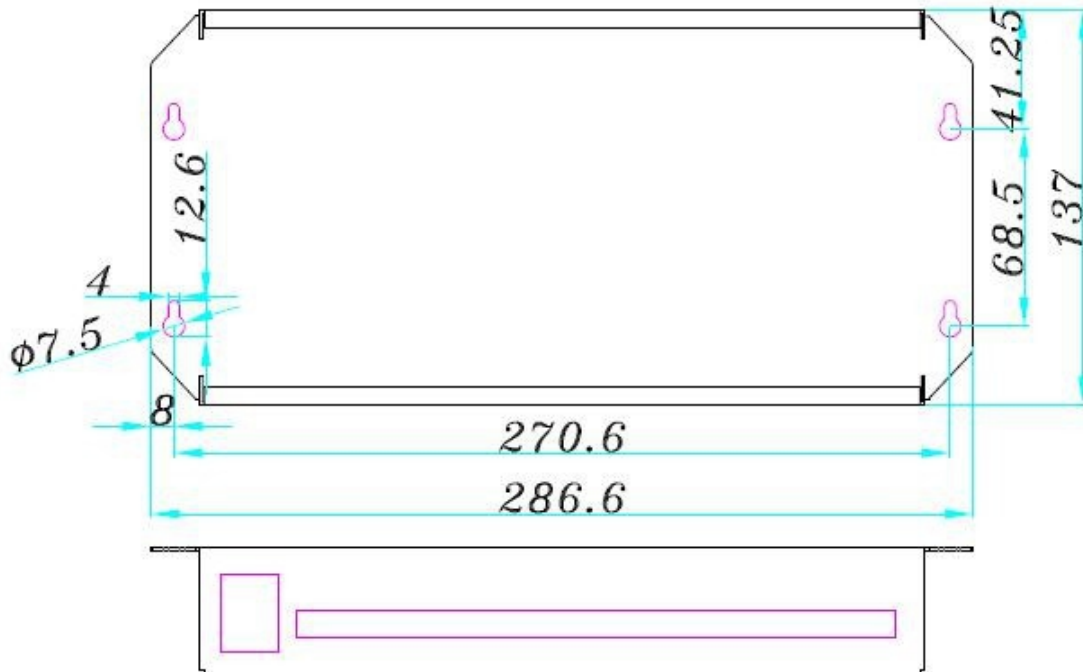
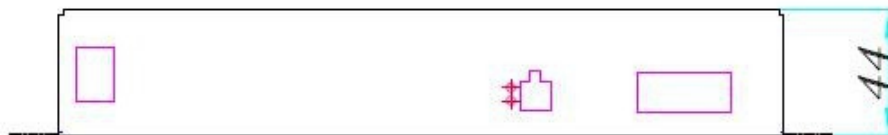
Light		
Type	Quantity	Definition
POWER	1	Power light, green. It is always on when the power supply is connected correctly, and off when the power supply is not connected correctly
ACTIVE	1	Active light, yellow. The active light flashes slowly when the controller has a signal that is input, the active light is always on when there is no signal input, and the active light goes out when the hardware fails.

Machine specification	
Input power	AC 100~240V
Dimension	286L×137W×44H
Energy Consumption	15W
Operating Temperature	-20℃ ~ 60℃
Operation Humidity	5% ~ 85%RH
Net	1.22 kg

Appendix: Device Size



subcontroller(cover)



subcontroller (bottom)